

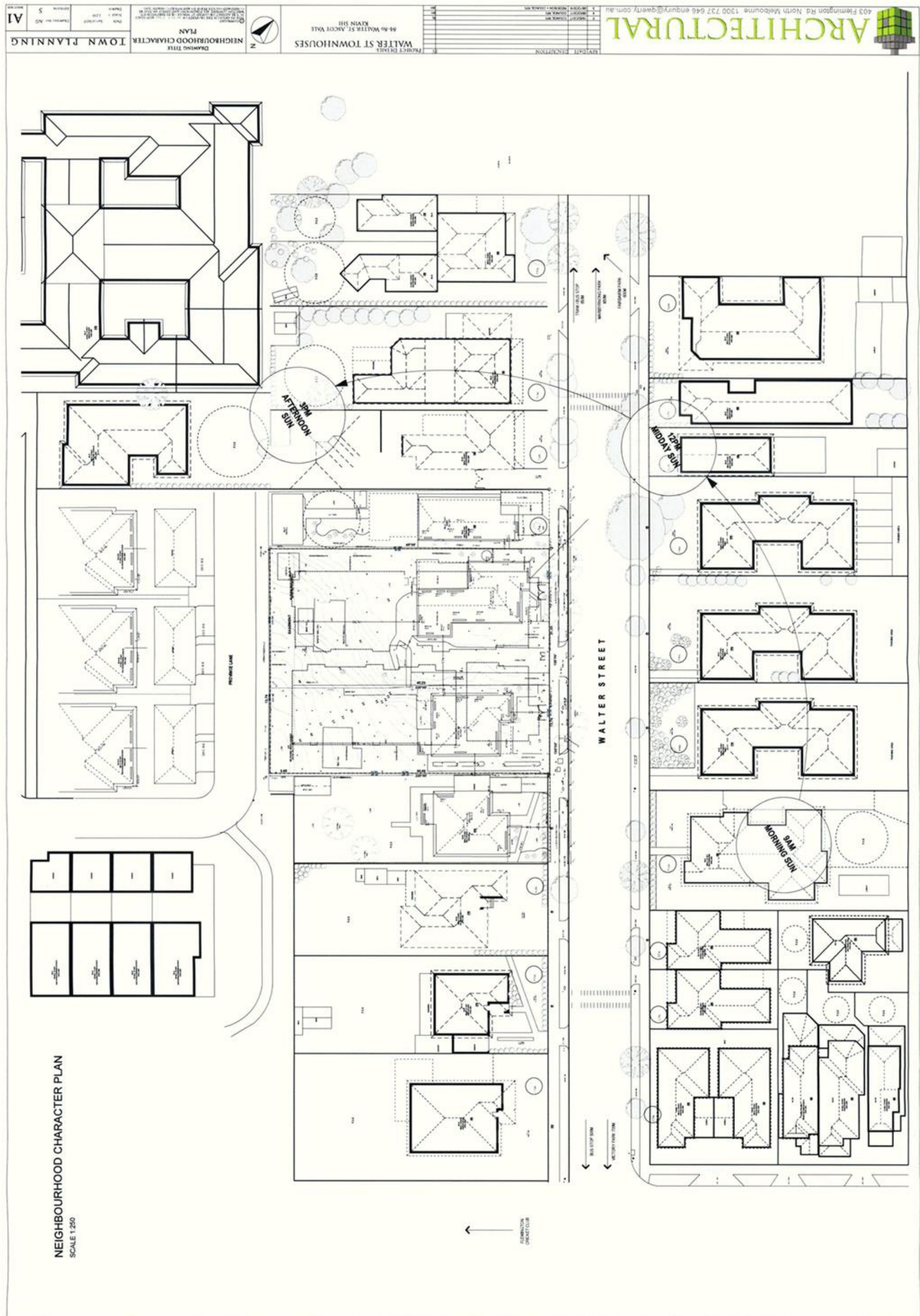


## 84-86 WALTER STREET - 8 X LUXURY TOWN HOUSES WITH LANDSCAPING

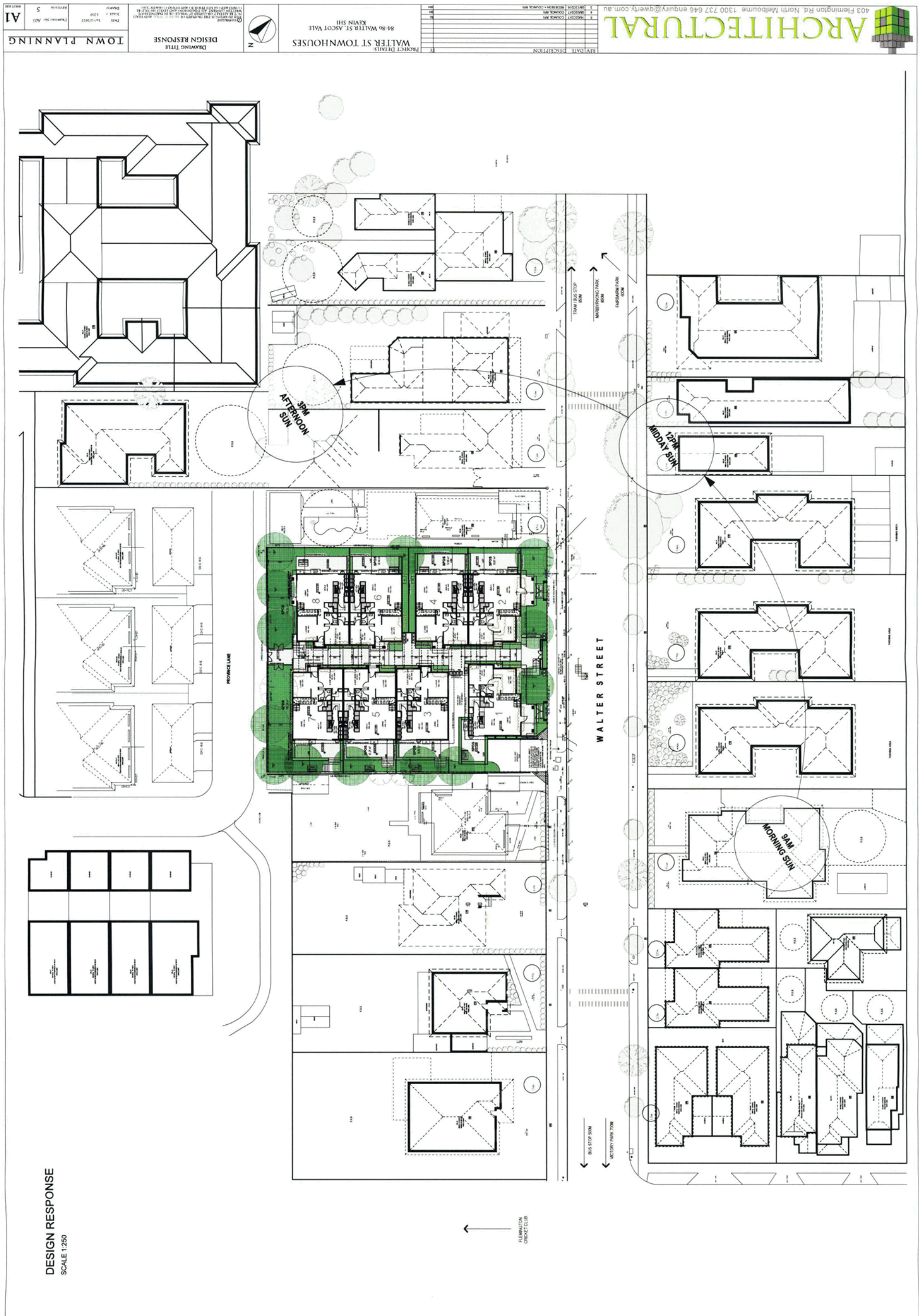


 ARCHITECTURAL

















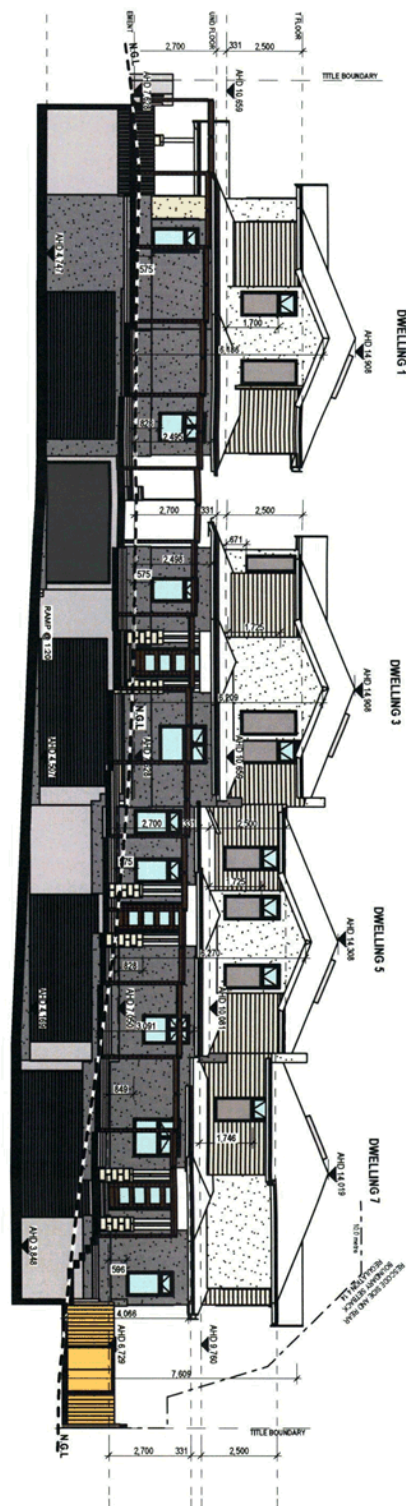












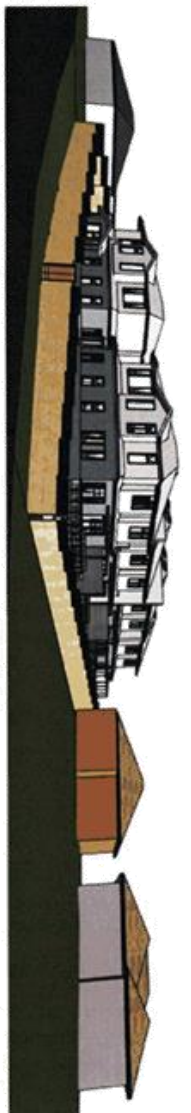




PROPOSED MATERIAL  
SCHEDULE

|  |  |
|--|--|
|  | 1<br>SELECTED RENDERED FINISH<br>FRESH - PAINTED DALK<br>LEXICON QUARTER PINTO               |
|  | 2<br>SELECTED RENDERED FINISH<br>FRESH - PAINTED DALK<br>STRAP PINTO                         |
|  | 3<br>DRIVEWAY<br>FRESH - SELECTED<br>CONCRETE PAVING   |
|  | 4<br>SELECTED ROOF AND FASCIA<br>COATING<br>FRESH - COLORBOND<br>SHARP MIST GREY             |
|  | 5<br>TIMBER TRIMS FOR WINDOWS<br>AND DOORS<br>FRESH - PAINTED DALK<br>FAIR BIANCA HALF PINTO |
|  | 6<br>SELECTED CLADDING<br>FRESH - COLORBOND<br>SHARP MIST GREY                               |
|  | 7<br>SELECTED TIMBER FOR<br>BALCONIES, HANDRAILS<br>AND PERGOLA                              |
|  | 8<br>SELECTED TIMBER FOR<br>GARDEN BEDS AND DECKS  |
|  | 9<br>ALUMINUM WINDOW FRAMES<br>FRESH - POWDER COATED<br>COLORBOND MONUMENT                   |
|  | 10<br>SELECTED STONE CLADDING  |





3D PERSPECTIVE VIEWS



